



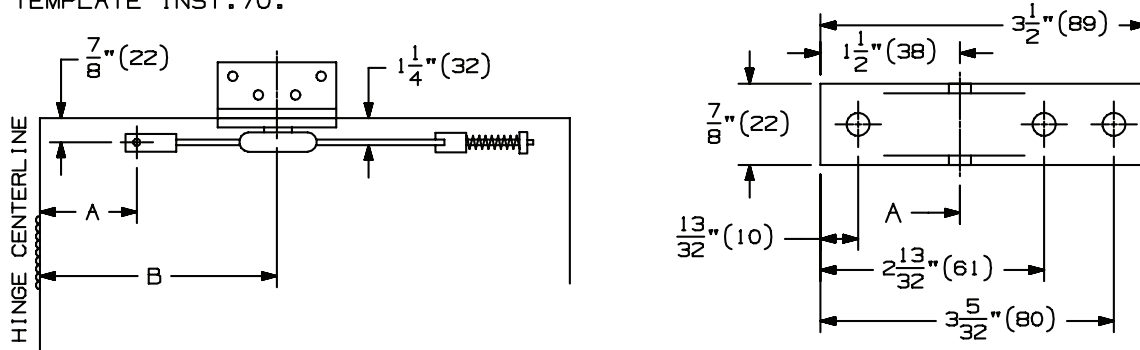
INST.70J

Surface Overhead Holder Angle Bracket (Push Side)

Installation Instructions

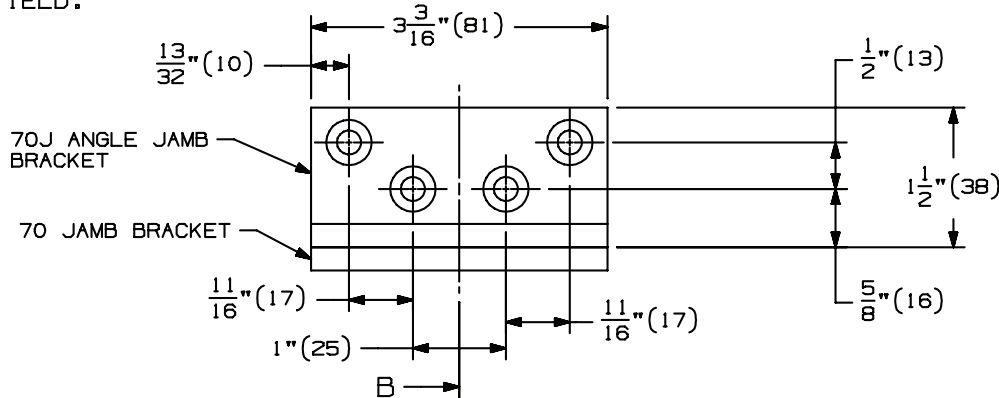
OVERHEAD HOLDER OR STOPS MUST BE INSTALLED BEFORE CLOSERS.

- 1. A. FOLLOW STEP 1 FROM THE 70 SERIES SURFACE OVERHEAD HOLDER INSTALLATION TEMPLATE INST.70.



DOOR BRACKET 70 SERIES

- 2. A. LOCATE "B" DIMENSION ON THE FACE OF THE FRAME OR ON THE FLUSH TRANSOM PANEL. NOTE THAT THE "B" DIMENSION IS MEASURED FROM THE CENTERLINE OF THE HINGE AS SHOWN.
- B. FOR METAL FRAMES, USE A #7 DRILL AND 1/4"-20 TAP IN 4 PLACES. FOR WOOD FRAMES, DRILL 3/16" PILOT HOLES IN 4 PLACES. MOUNTING HOLES SHOULD BE PREPARED IN THE FIELD.



- 3. A. FOLLOW STEP 3 FROM THE 70 SERIES OVERHEAD SURFACE HOLDER INSTALLATION TEMPLATE INST.70
- 4. A. INSTALL ANGLE BRACKET ONTO STANDARD JAMB BRACKET WITH 1/4"-20 X 1/2" FPHMS PROVIDED WITH THE ANGLE BRACKET.
- B. INSTALL THE DOOR BRACKET ON THE DOOR.
- C. INSTALL THE ANGLE BRACKET TO THE FACE OF THE FRAME OR THE TRANSOM PANEL.

SCREW DETAILS

	QTY	WOOD	METAL
ANGLE	4	1/4"-20 X 1/2" FPHMS	1/4"-20 X 1/2" FPHMS
JAMB	4	#14 X 1 1/2" FPHSMS	1/4"-20 X 3/4" FPHMS
DOOR	2	1/4"-20 X 1 3/4" PPHMS	1/4"-20 X 1 3/4" PPHMS
DOOR	2	1/4"-20 GROMMET NUTS	1/4"-20 GROMMET NUTS
DOOR	1	#14 X 1 1/2" PPHMS	
DOOR	3		1/4"-20 X 3/4" PPHMS

NOTE: DIMENSIONS IN () ARE IN MILLIMETERS

Customer Service
1-877-671-7011 www.allegion.com/us

